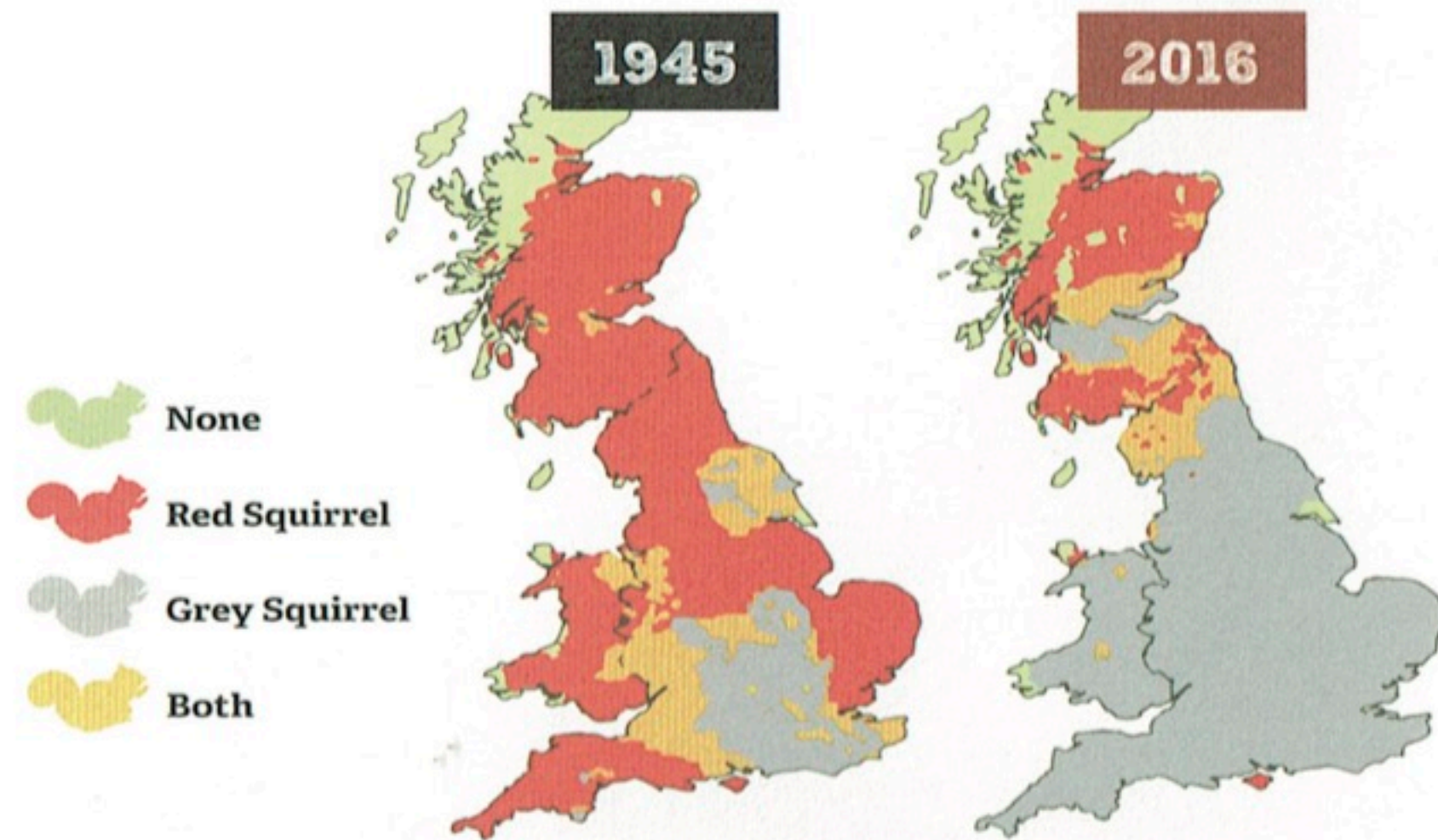


The battle for survival...

"More than 80% of the nation's red squirrels have been wiped out since 1945. Today almost all of England's red squirrels are found in the North – making the refuge on the Sefton Coast vitally important."



<p>Lancashire Wildlife Trust work throughout an area of 197km² to conserve red squirrels</p>		<p>Since our appointment of a fulltime Red Squirrel Officer we've seen a steady rise in the distribution of red squirrels across the region.</p>
	<p>Grey Squirrels were introduced to the UK in the 1870s and now number in their millions.</p>	
<p>Staff and volunteers carry out surveys and grey squirrel management in over 140 different woodlands</p>		<p>We currently have over 50 volunteers helping our two Red Squirrel Officers carry out our crucial work across North Merseyside and West Lancashire.</p>

"The Wildlife Trusts play an important role in protecting our natural heritage. I would encourage anyone who cares about wildlife to join them."



Sir David Attenborough,
President Emeritus, The Wildlife Trusts

BECOME A MEMBER TODAY...

Giving £5 per month could help to fund a local survey into the distribution of red squirrels, or pay for red squirrel feeders.

Individual or joint membership

You will receive a 96 page guide to our nature reserves, our regular membership magazine and e-news where you will find opportunities to get involved.



Family membership

As well as receiving all of the benefits above, children will become Wildlife Watch members and receive all kinds of goodies, including posters, stickers, quarterly magazines and the opportunity to join in your local watch group.



Minimum rates apply. Please visit www.lancswt.org.uk for full details.



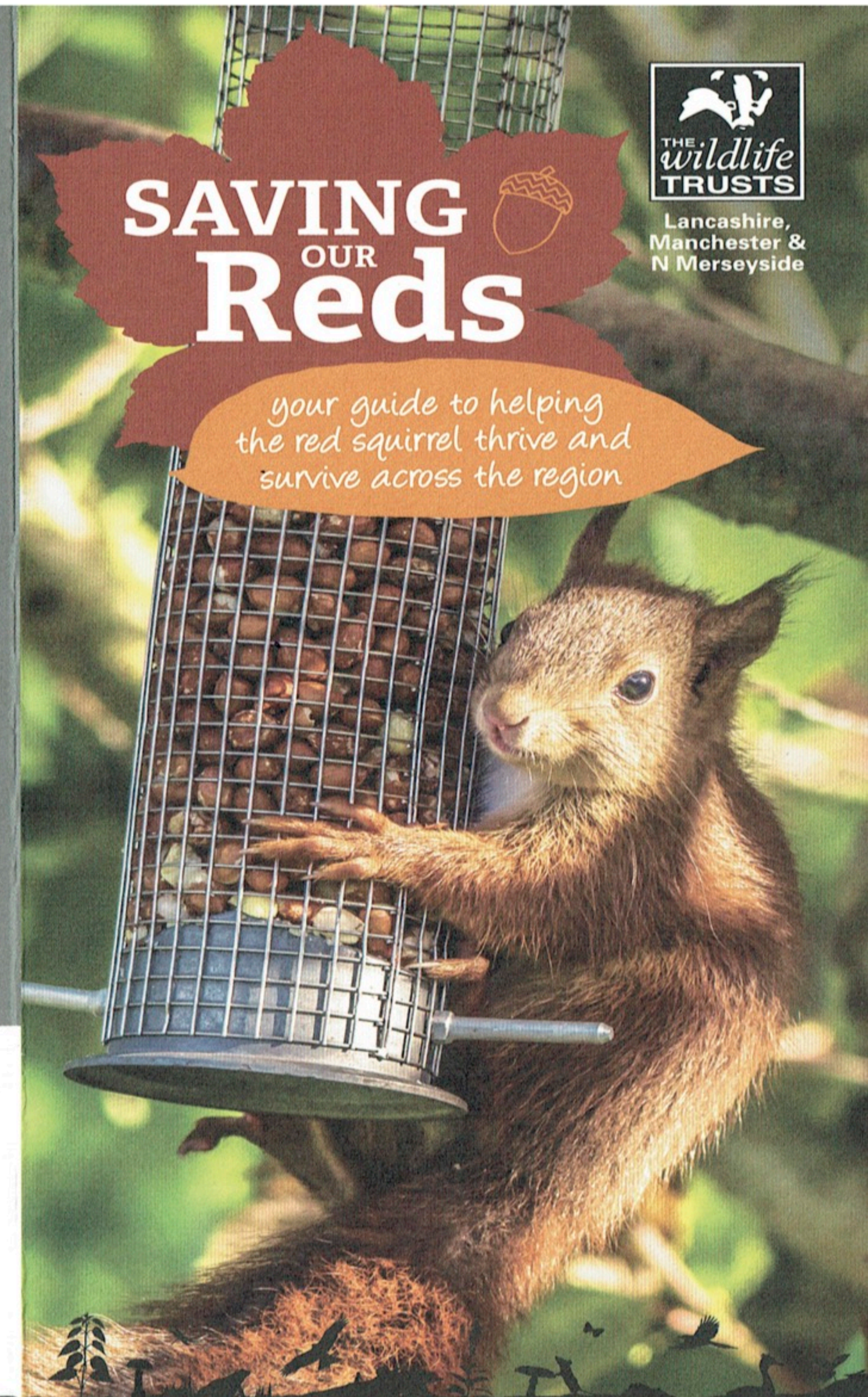
red.squirrel@lancswt.org.uk
0151 9203769 | 07590 745862
Merseyside and Lancashire Red Squirrel Project
Lancswildlife

Visit us at www.lancswt.org.uk

Photographs by Rachel Cripps, Andrew Walker, Brian Hogan, Steve Priestley and Alan Wright. Cover photograph by John Fisher. UK distribution map from Red Squirrel Survival Trust (RSST).

The Wildlife Trust for Lancashire, Manchester & North Merseyside
The Barn, Berkeley Drive, Bamber Bridge,
Preston, Lancashire, PR5 6BY
Tel 01772 324 129. Registered charity no 229325.

Funded by:



Lancashire,
Manchester &
N Merseyside

SAVING OUR Reds

your guide to helping the red squirrel thrive and survive across the region



Lancashire,
Manchester &
N Merseyside

Protecting Wildlife for the Future

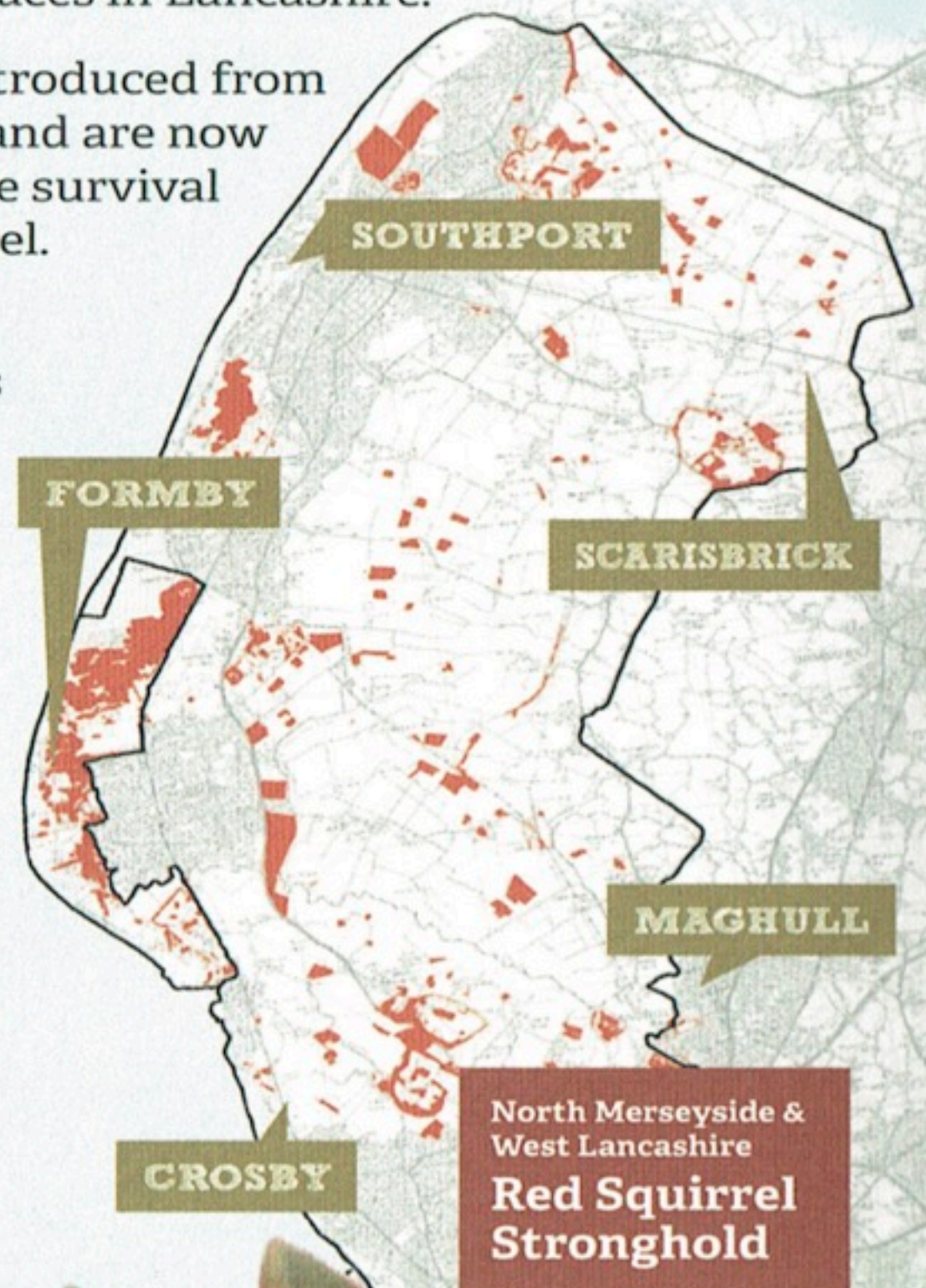
It is the aim of the Lancashire Wildlife Trust that red squirrels will once again become a common sight throughout North Merseyside and West Lancashire.

Red Squirrels are under threat and have been lost from many places in Lancashire.

Grey Squirrels were introduced from North America in 1876 and are now the biggest threat to the survival of our native red squirrel.

Greys outcompete reds for resources, as well as carrying the deadly squirrel pox virus.

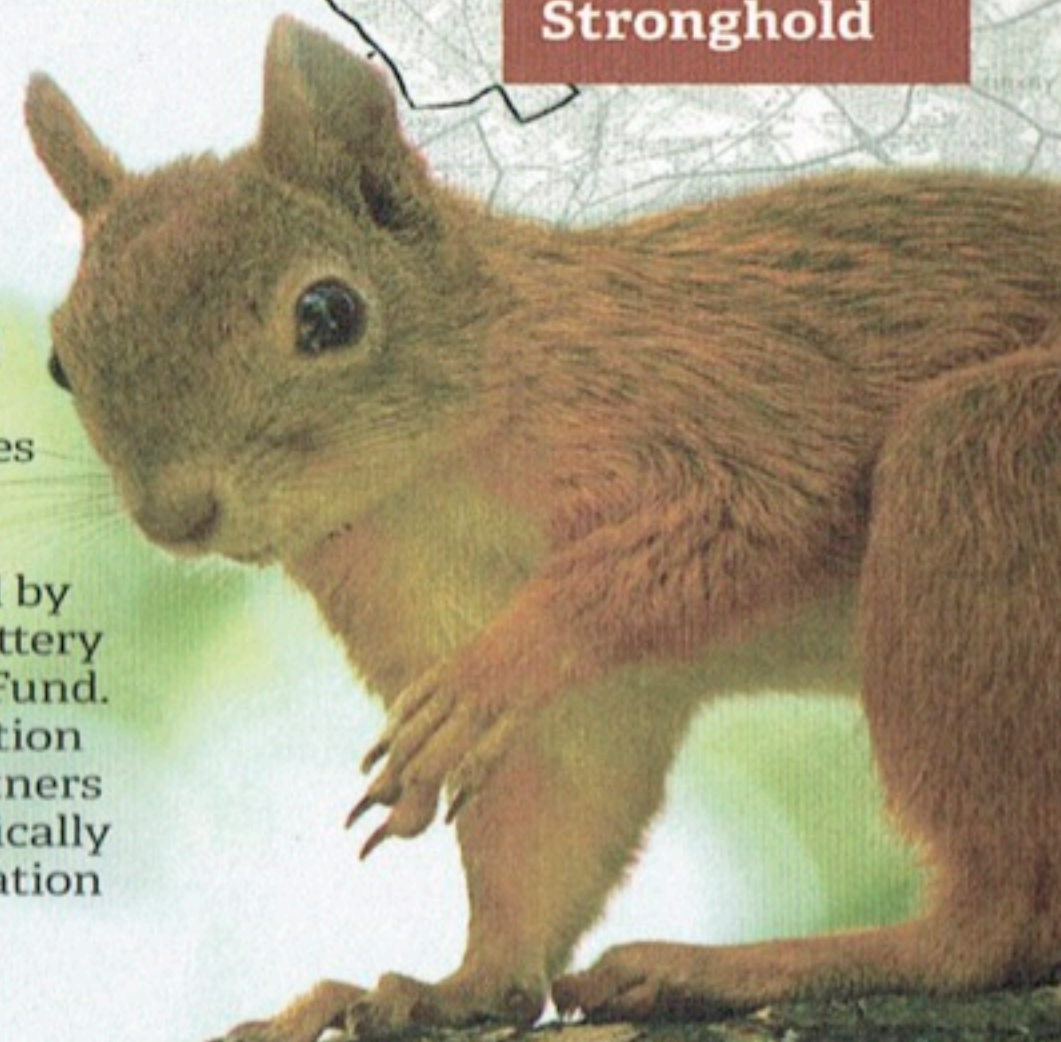
Thanks to the perseverance and dedication of our volunteers and project officers, the red squirrel population has been steadily increasing – but there is still plenty of work to be done.



The Lancashire Wildlife Trust is a partner in the first national network working to secure the survival of these iconic creatures – Red Squirrels United.

Red Squirrels United is funded by EULIFE14 and the National Lottery through the Heritage Lottery Fund. It marks the biggest ever coalition of academics and delivery partners working together on a scientifically robust programme of conservation for red squirrels.

Project number:
LIFE14 NAT/UK/00467



What we are doing...

We are carrying out a wide variety of work to ensure that the red squirrel not only survives, but thrives across North Merseyside, West Lancashire and beyond...

BI-ANNUAL MONITORING PROGRAMME

We run a bi-annual monitoring programme every spring and autumn to establish the distribution of red and grey squirrels throughout north Merseyside and west Lancashire. This is undertaken for 3 weeks in early spring and 3 weeks in the autumn.

SURVEYS

Surveying the region's 142 woodlands is a key aspect of our red squirrel conservation. It allows us to map distributions of red and grey squirrels and informs our conservation strategy. The main methods we use for surveying woodlands are hair tubes and trail cameras.

GREY SQUIRREL MANAGEMENT

Managing the grey squirrel population is an extremely vital part of ensuring the survival of red squirrels in the region. This is done humanely via urban trap loan schemes and trapping in woodlands throughout the red squirrel stronghold.

COMMUNITY ENGAGEMENT

Along with help from our volunteers, our Project Officer runs regular events and training workshops throughout the area, all aimed at engaging with and educating communities about red squirrels battle for survival – and how to help and get involved.

WORKING WITH LANDOWNERS

We liaise with and work alongside over 40 landowners across the region to ensure that habitats are managed in order to benefit red squirrels and allow them to re-colonise suitable areas.

How can you help...

There are several *simple ways* in which **YOU** can help us save the reds...

Report any sightings of red and grey squirrels to us by calling us on **07590 745862** or emailing red.squirrel@lancswt.org.uk

If you are lucky enough to have red squirrels visit your garden and you wish to feed them, ensure you clean feeders and water bowls regularly to prevent the risk of disease. It is also important to provide a variety of foods such as **monkey nuts, hazelnuts, sunflower seeds, apple or carrot** and always provide fresh water.



You can also support our work by becoming a member of the Lancashire Wildlife Trust.

Just visit www.lancswt.org.uk for more information.

If you see a squirrel and are unsure whether it's a red or grey, here's a few basic identification tips...

Red Squirrels



- Smaller
- Ear tufts
- Tail uniform in colour

Grey Squirrels



- Larger
- Rounded ears with no tufts
- Tail has white hairs giving 'halo effect'