

## VISIT

VISIT Sefton and West Lancs are continuing to develop the cycling offer within and around the area by building on the existing potential.

Co-ordinated packages of activities, promoting and marketing the wider area, are continually being developed.

For information on any upcoming events and other cycle routes see our website [www.visitseftonandwestlancs.co.uk](http://www.visitseftonandwestlancs.co.uk)

## CYCLE ROUTES

This route is a collaboration between Visit and Wigan Council, together with the Canal and River Trust. It is part of the National Cycle Network, route number 562. If you enjoy this route why not try one of the series of themed cycle routes in Sefton and West Lancashire.

They are suitable for families and the less experienced cyclists.

## CYCLE HIRE

If you are visiting Sefton and West Lancs and you don't have your bike, you can still enjoy our range of themed routes by hiring a bike at one of our cycle hire centres or docking stations throughout the area. A wide range of bikes are available for all the family.

For further information or to pre-book, please contact the cycle hire staff or see the website.

01704 500996.  
[info@southportcyclehire.info](mailto:info@southportcyclehire.info)  
[www.southportcyclehire.info](http://www.southportcyclehire.info)



Visit –  
Visitors in Sustainable Integrated Transport  
Funded by the Department for Transport through the Local Sustainable Transport Fund



## ROUTE DESCRIPTION

- 1 Starting by the Carousel on Southport Promenade carefully cross the road and head off to your right. Continue along The Promenade until you reach Coronation Walk, just past the Royal Clifton Hotel, where you turn left.
- 2 At the end of Coronation Walk you come to the famous Lord Street, the home of elegant shopping in classic Victorian surroundings, cross the road here and enter Portland Street. Continue straight ahead for approximately 1 mile, carefully crossing the railway at the level crossing and then Cemetery Road at the traffic signals.
- 3 At the end of Portland Street you enter the playing fields and follow the cycle path out towards Town Lane Kew.
- 4 On reaching Town Lane Kew turn left and continue ahead, passing the front entrance of Southport Hospital and then turn left along the cycle path through the Hospital grounds. On exiting the Hospital grounds follow the cycle track to the right and cross Scarisbrick New Road at the crossing point.
- 5 Continue ahead on the cycle path across Meols Park, cross Meols Cop Road at the controlled crossing and then continue ahead alongside Fine Janes Book until you reach Foul Lane. Turn right here and continue on Foul Lane until you reach Scarisbrick New Road (A570). Bear left at the roundabout to join Scarisbrick New Road and after a short distance join the cycletrack.
- 6 Continue along the cycle track until you reach Pool Hey Lane where you turn left. Continue ahead, cross at the level crossing, and turn right into Wyke Cop Road at the T junction. You should by now be seeing some of the beautiful views across the 'Moss' and the ever changing scenery of the farmland of West Lancashire.
- 7 Turn left into Woodmoss Lane and then Drummersdale Lane until you turn left into Merscar Lane at Smithy Lane ends. Continuing along here bear right into Martin Lane. On reaching the left hand bend in the road you continue ahead into Gorst Lane to access the towpath of the Leeds Liverpool Canal.
- 8 Now you can enjoy the towpath for the remainder of the journey into Wigan.

There are a number of lovely places to visit along the way, easily accessible from the Canal, take the opportunity to get off your bike, relax and have some refreshment.

Here are a few of the wonderful things you can see:

- Southport – a wonderful classic resort with something for all the family to enjoy.
- Town Lane Community Woodlands – part of the Forestry Commission's Newlands project.
- Burscough Wharf – the mid point of the ride and a wonderful complex of cafes and bars
- A number of wonderful visitor attractions are within easy reach of Burscough, as shown on the map overleaf.
- The Ship at Lathom – A short detour up Wheat Lane takes you to a lovely pub that welcomes walkers and cyclists alike. Dogs are also welcome.

- Views over the River Douglas that passes near to the Canal.
- Dean Wood Lock House – a lovely cottage positioned beside a large lock system, once a toll collection point.
- Just outside Gathurst on the far side of the Canal is Otters Croft Wood, a fine oak woodland, formerly part of the Standish Hall Estate. Not open to the public but a wonderful variety of birds, plants and wildlife can still be seen from the towpath.
- Crooke Marina, just before you reach the quaint Crooke Village. Maybe an ideal place to stop for a while.
- Scott Lane Ponds, a wide expanse of reed beds and small pools, next to the JJB Stadium.

### SOUTHPORT

Southport combines beautiful beaches, family attractions and the UK's oldest iron pier with fantastic shopping and great cycle hire to explore the area. Southport has over 20 miles of unspoilt coastline and the largest area of undeveloped sand dunes in the UK. With extensive Pine woods, miles of coastal walks and several impressive parks and gardens it's the perfect place to unwind and recharge your batteries.

There are now 10 themed routes for you to enjoy, most start in Southport, however, there are routes in Formby, Maghull and Crosby and these are easily accessible by train. You can also take your bike free of charge and without booking on the Merseyrail network.

### BURSCOUGH

Burscough Wharf re-opened its doors to the paying public in February 2011 and is fast becoming the new focal point for both the local community and the residents of the surrounding villages. Centered around food and drink, arts and crafts, the creative industries, fashion and the community thousands of people visited to see West Lancashire's newest retail and leisure development.

### WIGAN

Wigan is blessed with so much green space and cycling is a great way to get round and see it all. It is home to a number of other wonderful routes for you to enjoy, including from Wigan Pier you can connect with the Greenheart of the borough – a superb network of paths, wetlands, grasslands, nationally improved habitats, recreational facilities, restored canals and public rights of way that covers an area of 57sq.km.

**Wigan Flashes** is within easy reach of Wigan Town Centre and offers many recreational facilities for visitors of all ages and the site is nationally important for birds making it very popular with nature enthusiasts and bird watchers.

HRH the Duke of Gloucester visited Wigan as part of the Diamond Jubilee celebrations in 2012 and dedicated over 35 kilometres of off-road recreational routes as the **Jubilee Way** from Red Rock at Haigh in the North West to Leigh and Astley in the east.

**Haigh Hall Country Park** is a great day out for all the family, featuring nature trails, a craft gallery, miniature railway, a café, golf complex and play zone, all located within 2.5 miles from the centre of Wigan.

*NOTE: the canal towpath changes sides along the way, this map may not definitively show the correct side of the canal it is on.*


For further information please visit the following websites:

[www.visitseftonandwestlancs.co.uk](http://www.visitseftonandwestlancs.co.uk)  
[www.wigan.gov.uk](http://www.wigan.gov.uk) [www.tfgm.com/cycling](http://www.tfgm.com/cycling)

pier  pier



- Easy/moderate
- Mostly off road
- Distance 21 miles
- Time approx 3 hours

 Transport for Greater Manchester

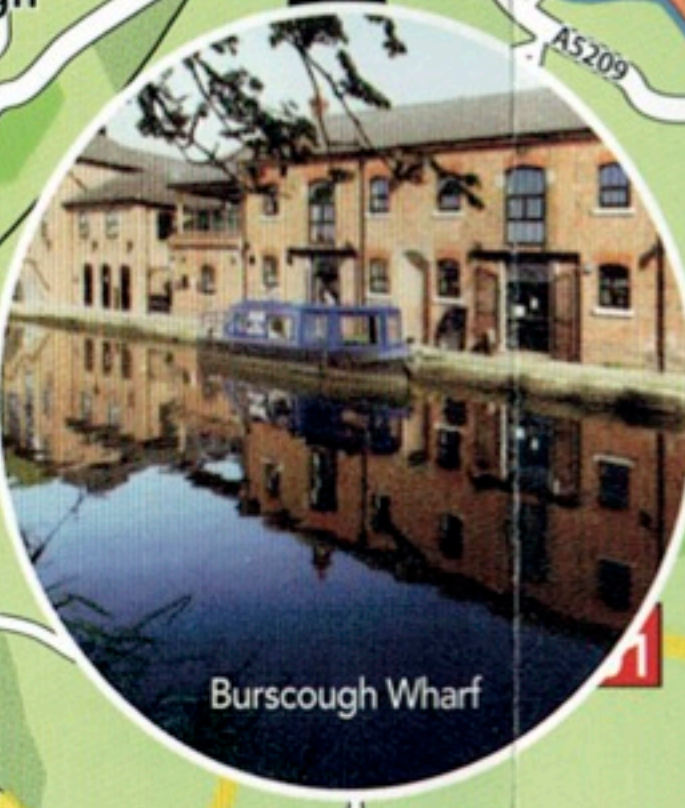
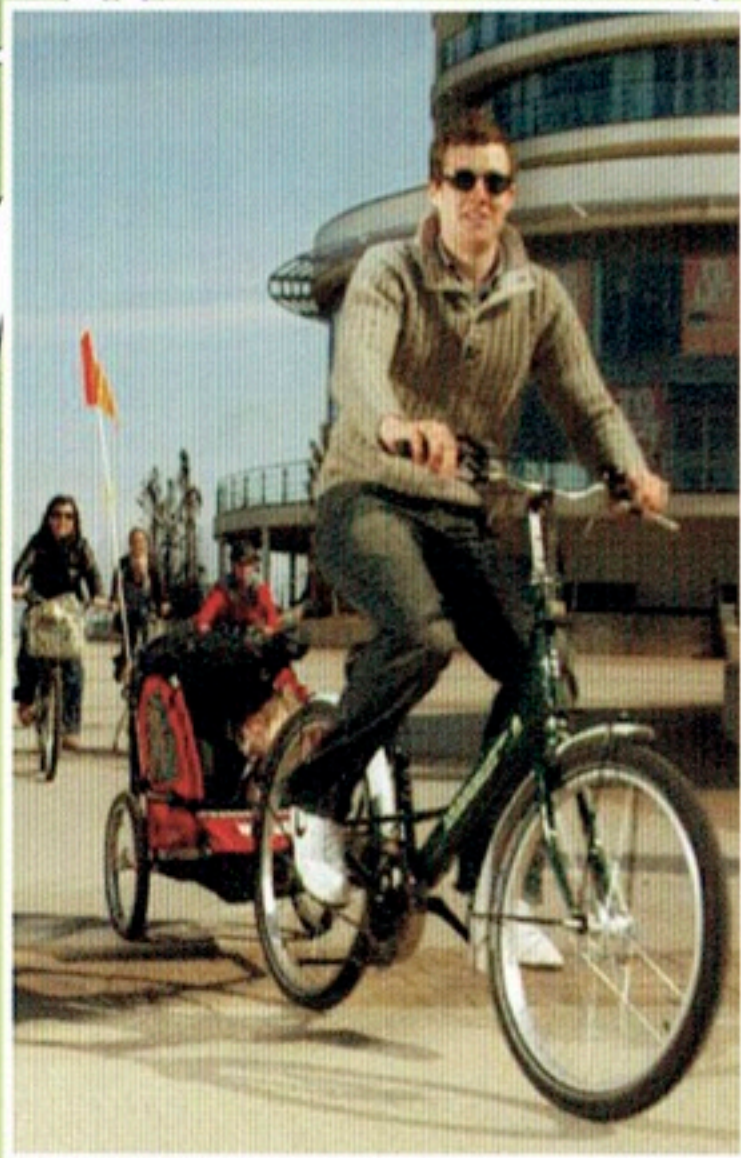
 Wigan Council





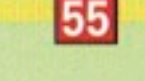
# SUNNYSIDE GUEST HOUSE



- INTERESTING STOPS ALONG THE ROUTE**
- 1 Martin Mere
  - 2 Windmill Animal Farm
  - 3 Leisure Lakes
  - 4 Mere Sands Wood Nature Reserve
  - 5 Rufford Old Hall
  - 6 Burscough Wharf
  - 7 Botanic Gardens
  - 8 Scarisbrick Marina
  - 9 Fettle's Wharf & St Marys Marinas
  - 10 Haigh Hall and Country Park
  - 11 Wigan Flashes



**NCN ROUTE KEY**

-  Pier to Pier (NCN 562)
-  Lancashire Cycleway (NCN 91)
-  (NCN 55)